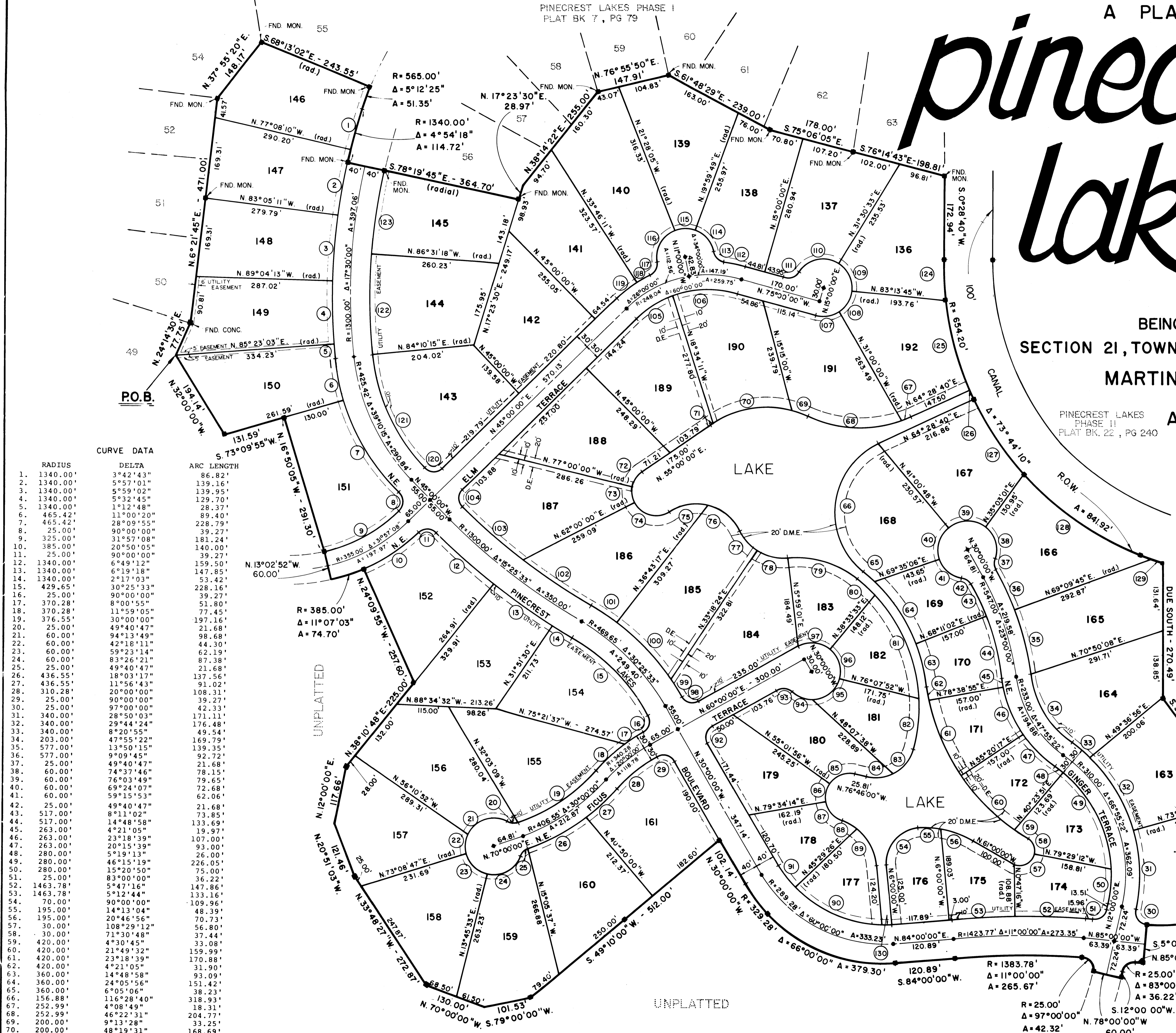
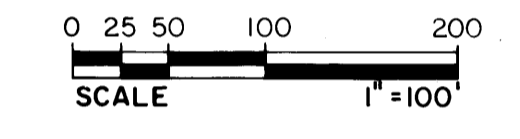


A PLAT OF Pinecrest Lakes PHASE III

BEING A PORTION OF
SECTION 21, TOWNSHIP 37 SOUTH, RANGE 41 EAST
MARTIN COUNTY, FLORIDA

AUGUST, 1982

PINECREST LAKES
PHASE II
PLAT BK. 22, PG 240



CURVE DATA

RADIUS	DELTA	ARC LENGTH
1. 1340.00'	3°42'43"	86.82'
2. 1340.00'	5°57'01"	139.16'
3. 1340.00'	5°59'02"	139.95'
4. 1340.00'	5°32'45"	129.70'
5. 1340.00'	1°12'48"	28.37'
6. 465.42'	11°00'20"	89.40'
7. 465.42'	28°09'55"	228.79'
8. 25.00'	90°00'00"	39.27'
9. 325.00'	31°57'08"	181.24'
10. 385.00'	20°50'05"	140.00'
11. 25.00'	90°00'00"	39.27'
12. 1340.00'	6°49'12"	159.50'
13. 1340.00'	6°19'18"	147.85'
14. 1340.00'	2°17'03"	53.42'
15. 429.65'	30°25'33"	228.16'
16. 25.00'	90°00'00"	39.27'
17. 370.28'	8°00'55"	51.80'
18. 370.28'	11°59'05"	77.45'
19. 376.55'	30°00'00"	197.16'
20. 25.00'	49°40'47"	21.68'
21. 60.00'	94°13'49"	98.68'
22. 60.00'	42°18'11"	44.30'
23. 60.00'	59°23'14"	62.19'
24. 60.00'	83°26'21"	87.38'
25. 25.00'	49°40'47"	21.68'
26. 436.55'	18°03'17"	137.56'
27. 436.55'	11°56'43"	93.02'
28. 310.28'	20°00'00"	108.31'
29. 25.00'	90°00'00"	39.27'
30. 25.00'	97°00'00"	42.33'
31. 340.00'	28°50'03"	171.11'
32. 340.00'	29°44'24"	176.48'
33. 340.00'	8°20'55"	49.54'
34. 203.00'	47°55'32"	139.79'
35. 577.00'	13°50'15"	139.95'
36. 577.00'	9°09'45"	92.72'
37. 25.00'	49°40'47"	21.68'
38. 60.00'	74°37'46"	78.15'
39. 60.00'	76°03'49"	79.65'
40. 60.00'	69°24'07"	72.68'
41. 60.00'	59°15'53"	62.06'
42. 25.00'	49°40'47"	21.68'
43. 517.00'	8°11'02"	73.85'
44. 517.00'	14°48'58"	133.69'
45. 263.00'	4°21'05"	19.97'
46. 263.00'	23°18'39"	107.00'
47. 263.00'	20°15'39"	93.00'
48. 280.00'	5°19'13"	26.00'
49. 280.00'	46°15'19"	226.05'
50. 280.00'	15°20'50"	75.00'
51. 25.00'	83°00'00"	36.22'
52. 1463.78'	5°47'16"	147.86'
53. 1463.78'	5°12'44"	133.16'
54. 70.00'	90°00'00"	109.96'
55. 195.00'	14°13'04"	48.39'
56. 195.00'	20°46'56"	70.73'
57. 30.00'	108°29'12"	56.80'
58. 30.00'	71°30'48"	37.44'
59. 420.00'	4°30'45"	33.08'
60. 420.00'	21°49'32"	159.99'
61. 420.00'	23°18'39"	170.88'
62. 420.00'	4°21'05"	19.96'
63. 360.00'	14°48'58"	93.09'
64. 360.00'	24°05'56"	151.42'
65. 360.00'	6°05'06"	38.23'
66. 156.88'	116°28'40"	318.93'
67. 252.99'	4°08'49"	18.31'
68. 252.99'	46°22'31"	204.77'
69. 200.00'	9°13'28"	33.25'
70. 200.00'	48°19'31"	168.69'
71. 200.00'	2°09'02"	7.51'
72. 50.00'	42°00'00"	36.65'
73. 50.00'	41°00'00"	35.78'
74. 50.00'	97°00'00"	84.65'
75. 100.00'	46°34'14"	81.28'

CURVE DATA

RADIUS	DELTA	ARC LENGTH
76. 100.00'	52°25'46"	91.51'
77. 100.00'	30°41'36"	53.57'
78. 100.00'	39°18'24"	68.60'
79. 200.00'	44°00'00"	153.59'
80. 340.00'	7°55'13"	47.00'
81. 340.00'	41°00'23"	243.34'
82. 340.00'	18°04'24"	107.25'
83. 80.00'	48°38'51"	67.93'
84. 80.00'	39°35'09"	55.27'
85. 50.00'	68°15'56"	59.57'
86. 50.00'	45°23'50"	39.62'
87. 50.00'	60°34'14"	52.86'
88. 115.00'	19°54'13"	39.95'
89. 115.00'	45°05'47"	90.51'
90. 249.28'	46°53'19"	204.00'
91. 249.28'	14°30'34"	63.13'
92. 25.00'	90°00'00"	39.27'
93. 25.00'	72°53'43"	31.31'
94. 60.00'	44°30'39"	46.61'
95. 60.00'	74°30'56"	78.03'
96. 60.00'	65°18'35"	68.39'
97. 60.00'	68°33'33"	71.80'
98. 25.00'	90°00'00"	39.27'
99. 509.65'	5°03'32"	45.00'
100. 509.65'	18°13'11"	162.07'
101. 509.65'	7°08'49"	63.57'
102. 1260.00'	7°40'52"	168.92'
103. 1260.00'	7°44'41"	170.31'
104. 25.00'	90°00'00"	39.27'
105. 218.04'	24°05'18"	91.67'
106. 218.04'	35°54'42"	136.66'
107. 60.00'	46°00'00"	48.17'
108. 60.00'	52°13'45"	54.69'
109. 60.00'	65°15'43"	68.34'
110. 60.00'	89°24'16"	93.62'
111. 25.00'	72°53'43"	31.81'
112. 278.04'	9°42'37"	47.12'
113. 25.00'	73°42'37"	32.16'
114. 60.00'	59°00'11"	61.79'
115. 60.00'	41°27'53"	43.42'
116. 60.00'	79°31'55"	83.29'
117. 25.00'	73°42'37"	32.16'
118. 278.04'	6°28'48"	31.45'
119. 278.04'	11°13'49"	54.50'
120. 25.00'	90°00'00"	39.27'
121. 385.42'	39°10'15"	263.50'
122. 1260.00'	9°18'26"	204.68'
123. 1260.00'	8°11'34"	180.17'
124. 654.20'	7°52'38"	86.14'
125. 654.20'	16°42'15"	190.73'
126. 654.20'	1°45'07"	20.00'
127. 654.20'	16°32'11"	188.81'
128. 654.20'	17°56'41"	319.07'
129. 654.20'	1°15'18"	37.17'
130. 249.28'	1°36'07"	20.02'

NOTE: NO LOTS SHALL BE SUBDIVIDED EXCEPT TO CREATE LARGER LOTS.

- D.M.E. = DENOTES DRAINAGE MAINTENANCE EASEMENT
- = DENOTES PERMANENT REFERENCE MONUMENT (P.R.M.)
- = DENOTES PERMANENT CONTROL POINT (P.C.P.)
- D.E. = DRAINAGE EASEMENT

LINDA BROWNING FERRERA DESIGN INC
1200 N. W. 10th St., Ft. Lauderdale, FL 33304
TEL: (305) 555-1111